



**QATAR ELECTRO MECHANICAL GROUP**  
A CULTURE OF QUALITY & PRIDE





**Qatar  
Electro  
Mechanical  
Group**

## Who We Are

We are an ISO Accredited 'A' Grade MEP Engineering and Contracting Company operating from Qatar with our Headquarters in Doha. We have been a major player in the MEP field for more than a decade, during which time we have completed almost        prestigious projects, all professionally executed. We currently have multiple projects in our portfolio, at various stages of completion and all on or ahead of schedule.

We specialise in providing Mechanical, Electrical and Public Health Services, starting from design, through engineering, supply, installation, testing and commissioning of projects. Our successfully completed projects include commercial and residential complexes, luxury hotels, convention centers, stadia, parks, to name a few. Delivering value added services to our esteemed Clients with uncompromising quality.

Our staff strength, at present, is over 1500, comprising of highly qualified and experienced Managers, Engineers and Skilled Technicians who have strived to place us amongst the top MEP contracting companies of the State of Qatar.





## Environmentally Friendly and Sustainable

The trend towards eco-friendly projects is growing stronger and we are committed to assisting our clients build more energy efficient projects through the use of green building technologies, design and products.

We provide sustainable MEP solutions through consultancy and implementation services within Qatar and we are committed to protecting and preserving the Earth's natural resources and environment. Reducing our human footprint is a responsibility we take very seriously and we will continue to be a leader in the employment eco-friendly practices and policies.

Our vision has always been in-line with Qatar's development and growth. We implement a global strategy focused on developing core activities in the field of sustainable and environmentally friendly building services. This strategy is aimed at expanding the company's business activities and maintaining growth through innovation and entrepreneurship, developing large-scale projects in the State of Qatar and the region.

We have provided quality MEP services that have resulted in creating successful partnerships with our clients throughout the building process. We are a local Qatari MEP company, respected as a leader in the "team approach" to project delivery. We consistently rank as one of the top MEP contractors.

Delivering quality projects that add value to Qatar's growth strategy is the cornerstone on which we have built our reputation. Our pledge is to perform for our customers at the highest level by offering quality design and installations at competitive market prices. This policy has ensured the longevity of our company through repeat and referral business achieving customer satisfaction in all areas including timeliness, attention to detail and service-minded attitudes.

Our most valuable resource is our people, who carry forth and promote our traditions, values, and long-standing reputation for performance. We invest the time and energy in recruiting and developing our people's talent in order to maintain our stability and reputation in the market as a Reliable Partner to Qatar's Growth.

## SAFETY FIRST AND FOREMOST

It is an internationally recognized fact that Safety and Security in the Construction Industry is, at best, very poor and many leading nations are taking considerable steps to improve safety standards on construction sites.

For us the safety of our employees, our customers, subcontractors, the Team, the general public and any other person or party who steps onto or near one of our sites is of paramount importance. We maintain this belief throughout all phases of construction by adopting the most up to





date and comprehensive Safety Policy. It is our policy to always maintain effective standards that will guard against injuries and death occurring on the project.

Our policy encourages the maintenance of open communication between management and staff on all matters pertaining to safety. All employees are encouraged to express their concerns or suggestions to help promote safe work practices and conditions.

We provide current safety news and reading materials to all our employees and subcontractors. We constantly review safety activities and display signs and posters which are easily accessible to all employees. We hold ourselves responsible to the other team members, customers, subcontractors, suppliers architects, engineers and the communities in which we live and work.

## **QUALITY IS OUR POLICY**

Since 1998, we have been delivering exceptional service and quality projects that add value to our client's business strategy and which are the cornerstone on which we have built our reputation.

While success and growth are our objective, this also encompasses a fundamental responsibility towards quality and on time execution by our commitment to provide MEP construction services that are of a consistently

high quality, that conform fully with our customers' requirements and expectations, whilst at the same time conforming to statutory requirements and Regulation.

We place trust at the center of every relationship - with customers, subcontractors, suppliers, architects, engineers and fellow team members.

We are dedicated to the continual review, development and improvement of all aspects of our business, in particular :-

- The continual development and improvement of the Company's construction services in line with our clients' needs and expectations.
- The continual development of an efficient and effective Quality System and a constantly improving best practices attitude in the management of our projects, a system which ensures that the waste is minimised.
- The continual evaluation, assessment, training and development of our employees in order to meet our clients' and our expectations and objectives.
- The ongoing pursuit of the corporate culture that inspires development and continuous improvement, encouraging all employees to take total pride in and responsibility for their work and the development of better working practices.

- Establishing and reviewing S.M.A.R.T. quality objectives for all levels that are realistic, achievable and measurable taking due cognizance of outside influences that could prevent the achievement of the objectives.

### **Scope and Portfolio**

Our projects range from high rise residential and commercial buildings to majestic hospitality facilities to quality interior Fit-Outs.

Hospitality facilities include the Business Park with Crown Plaza Hotel, the Intercontinental Hotel, the Al Safa Hotel, Al Rames Tower, VB11 and VB17 at the Pearl – Qatar.

**Scope of work :** our work includes supply, installation, testing, commissioning and documentation of the complete MEP service (PACKAGE).

Residential projects include the Barzan Development Housing Complex

### **Quality Health Safety and Environmental Policy**

Our Quality, Health, Safety and Environmental Policy are the keystone of our Integrated Management System.



This is series of documents and processes which have been methodically developed to meet our exacting standards. The following are the foundation of our ISO certification:

- **ISO 9001:2008 Quality Management System**
- **ISO 14001:2004 Environmental Management System**
- **ISO 45001:2015 Occupational Health & Safety Management System.**

The objective of our Organization's Integrated Quality, Environment, Health and Safety Management System is to set the standards by which

we ensure that our operations fully comply with Employer's Requirement's, the relevant legislation, good working practice and other important requirements.

Our Integrated Management System ensures that the services we are providing are continuously meeting a high standard of quality with respect to the Environment, considering the society around us and the management of health and safety, which affects everyone who is involved.



PROJECTS		Our Work: From high rise residential and commercial buildings to majestic hospitality facilities;
Markets	Projects	
Residential	VB 11& 17 at the Pearl, Barzan Development Housing Complex, Various High end Villas	
Commercial	Doha Live, Kahramaa Tower, Business Park, Marina MIX 50 & Al Dana Tower	
Hospitality	Crown Plaza Hotel , Intercontinental Hotel & Al Safa Hotel Apartments, Renovation of Sheraton Hotel, Renovation of Marriott Hotel	
Entertainment	Qetaifan Island North Phase 1- Water Park & Doha Oasis	
Sports & Recreation	Horse Breeding Farm at Zubara & Qatar Racing & Equestrian Club	
Healthcare	TB Communicable Disease Unit, Hamad Hospital	
Education	Al Shamal Girls School & Al Shahaniya Girls School	



Current Projects



**Qetaifan Island North: Phase 1- Package 3 - Water Park**

The project contains leisure attractions, luxurious hotels, unrivalled accommodation and world class facilities that make it a modern, globally-competitive community – all within a unique design that is inspired by the rich culture and natural resources of the Middle East region.





### Doha live

Doha Live is an innovative 225-key 5 star hotel and mixed-use development, conveniently located along Airport Road in Najma, Qatar.

The main Hotel Building is 45-meters high, with five basement levels, an expansive ground floor, two mezzanines and eight further levels, with a total built up area of 26,556 m<sup>2</sup>.



## Completed Projects

### Intercontinental - The City Doha

The construction of a 5-star Intercontinental Hotel at West Bay. The tower is one of the highest in the West Bay area. A 59-storey structure comprising of facilities such as; restaurants, specialty kitchens, apartment units, executive lounges and Hotel facilities. In addition there is a Convention Hall designed to meet various conference and event requirements.





### Crown Plaza Hotel & Business Park

The project is a turnkey hospitality development, comprising five office buildings, a hotel and tourist apartment building, as well as conference and central facilities, including a showroom office.

The Crowne Plaza Hotel and Business Park encompasses a total built-up area of 66,674 m<sup>2</sup>



Completed Projects



**Kahramaa Tower  
(Al Rames Commercial Tower)**

A commercial office building, comprising of 35 floors and roof structure. The total rentable office space and commercial units are 132 units and 537 parking slots. Outdoor amenities include landscape planting bay and indoor amenities include coffee shop, Prayer Hall, multipurpose room and an entrance for VIPs. An estimated lot area of 5,700 square metres.





### **Viva Bahriya VB 11 & VB 17, Residential Towers - The Pearl Qatar (2 Towers)**

**The project comprises of 23 floors in the prestigious Pearl Qatar. 19 floors with 5 to 8 apartments on each floor with facilities that include gymnasium, swimming pool and spa area, a water feature, children's play area and landscape garden.**



## Completed Projects



### Hamad TB-Communicable Disease Center

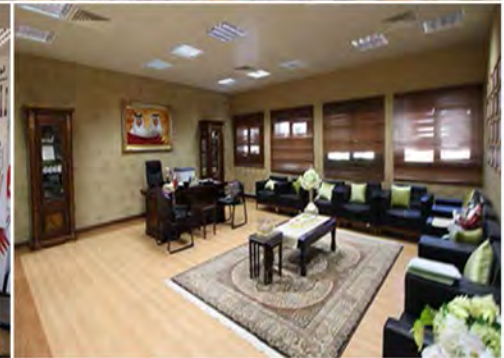
Ancillary structures comprise a substation and an underground water tank with an area of 282 m<sup>2</sup>. Comprehensive external works include paving, roads, landscaping, shaded parking, potable water supply, fire protection, irrigation, drainage, power distribution, and external lighting.



## Completed Projects

### Shamal & Shahaniya 2 Schools

The schools are consisted of two-story main building with classrooms, art rooms, laboratories, library, teacher rooms, administrative offices, assembly & multi-purpose halls, auditorium, canteen, kitchen, pantries, toilets, changing room, services rooms, ancillary buildings, water tank yard, sports courts, hard & soft landscaping, shaded structures, parking, boundary walls, fences & gates including site services and infrastructures





Completed Project Management Services

DOHA OASIS MIXED USE DEVELOPMENT



AL KHALIJI HEADQUARTERS



RESEARCH & DEVELOPMENT QATAR FOUNDATION



LE MIRAGE PREMIUM (5 Buildings)



FIVE STAR HOTEL - DUSIT



OFFICE TOWER - MARINA COM 20



## Partners & Alliances



AL MADADD  
AL QATARIAH CO.

شركة المدد القطرية ذ.م.م.

HDPE /UPVC  
Pipe & Fittings  
(Turkey)



CPVC  
Pipe & Fittings  
(India)



GRP Tanks  
(Korea)



PPRCT  
Pipe & Fittings  
(Lebanon)



Steep Pipes  
(Oman)



Cable & Trunking  
(India)



Water Heaters  
(UAE)



Plumbing Pumps  
(Italy)



Associated Companies



RC AL MANA is a classified Grade (A) License Contractor by the State of Qatar which is the country's first choice for a wide range of landmark building developments. RCA has a strong reputation of delivering a diverse portfolio of projects in the construction of medium and high-rise buildings and mixed-use developments.



Produce and supply ready mix concrete solutions to Qatar Construction Market.



Leading Aluminum and Glass Manufacturing Company In Qatar



Provides and distribute reliable, professional and Innovative MEP Products to Qatar Construction Market.



A sustainability and environmental consultancy aligned with Qatar's National Environmental Safety Strategy.



Wide array of turnkey solutions in areas of facilities management, security, corporate services, events and marketing services,



Leading specialists in providing fully integrated office design, interior fit-outs and furniture.



Dedicated general contracting company providing high technical quality and cost effective services



Qatari-based Flat Glass Processing Company having state of the art, glass processing facility



Provide Turn -Key solutions to Clients by maintaining the best quality of Residential /Commercial Furniture in the world



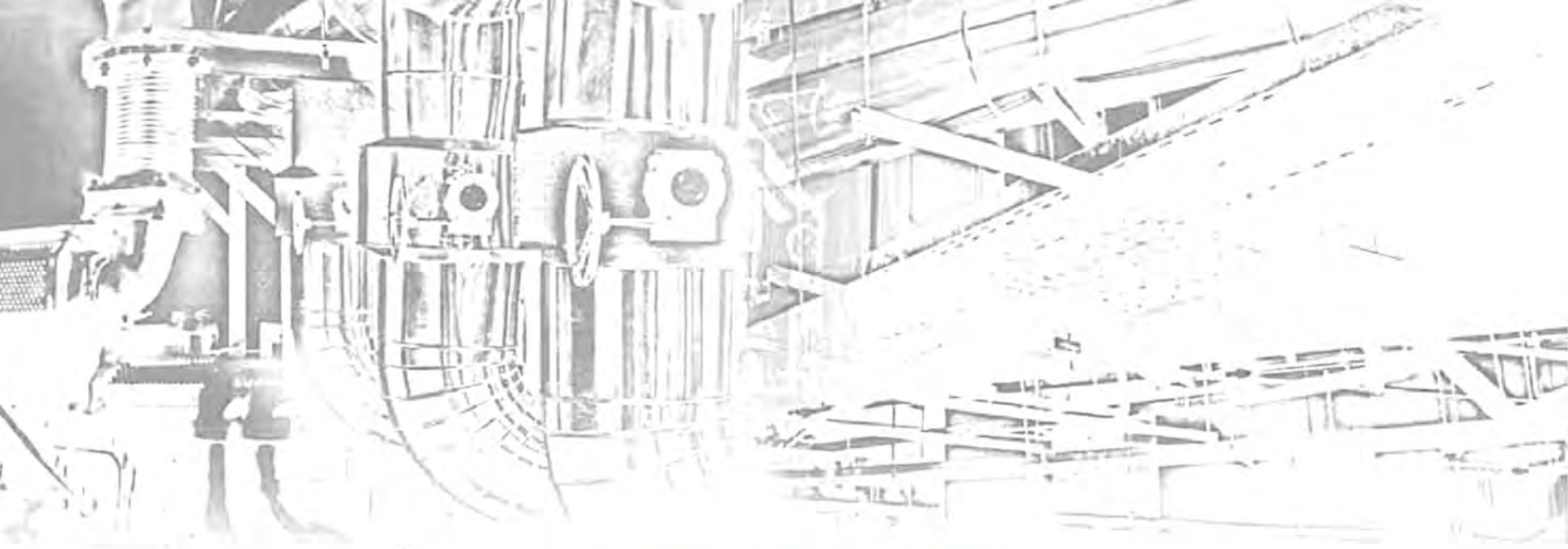
A variety of Design and Project Management fit out solutions for different Construction sectors in Qatar and UAE.



The leading manufacturer of Fiberglass (GRP/FRP) products in state of Qatar



A comprehensive suite of Facility Management Services in Qatar



**A CULTURE OF QUALITY & PRIDE**

**CONTACT US**

**PO Box : 6013, DOHA - QATAR - Tel : +974 4498 1671, +974 4498 1672 - Fax : +974 4416 9118**

**E-mail : [qemg@qemg.net](mailto:qemg@qemg.net), [qemg@qatar.net.qa](mailto:qemg@qatar.net.qa) - web : [www.qemg.net](http://www.qemg.net)**

